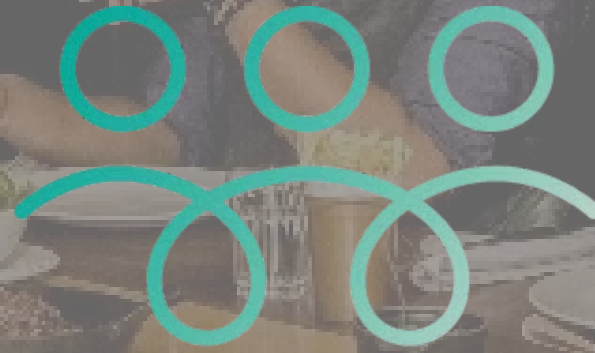


NOVEMBER 2024



CORPORATE AWAY DAY

FREE EVENT PLANNING MADE EASY

**PRIVATE DINING ROOMS
MANCHESTER**

WHO ARE WE?

Whether you're organising a corporate retreat, a team-building weekend, or a unique group activity, we offer seamless solutions to meet your needs.

Our intuitive platform and extensive listings simplify the planning process, allowing you to focus on creating meaningful experiences for your team.

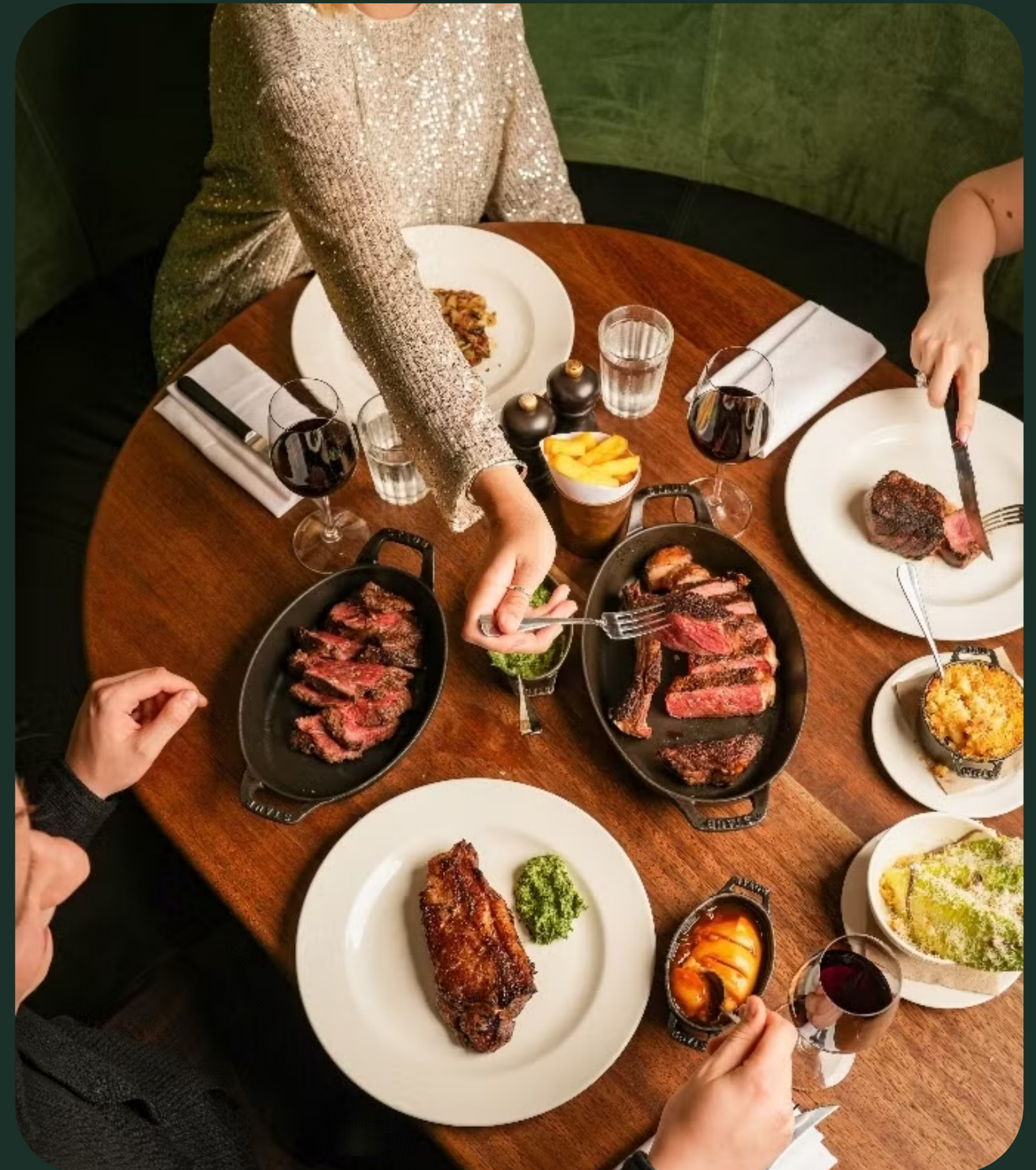
With our dedicated event specialists, you'll receive a customised itinerary, tailored to your specific objectives, ensuring a smooth and efficient planning and booking experience.

WHY CHOOSE US?

By using us you'll be saying goodbye to the hassle of scrolling through endless options, our AI assistance analyses your requirements and curates a selection of options tailored to your specific needs.

We create personalised itineraries that cater to you and your group to ensure everyone has a great time!

We have an extensive network of trusted venues and hospitality providers, guaranteeing you top-tier service.





HAWKSMOOR

Hawksmoor Manchester is located in a late Victorian courthouse on Deansgate, next door to Spinningfields.

There are three specially designed sharing menus to choose from, which offer a chance to sample a range of Hawksmoor classic dishes, the team can also suggest wine pairings that are tailored to your choice of menu.

The private dining room is a beautiful glass-doored room adjacent to the main restaurant. A long oval dining table fills the room, which can seat groups of up to 14, creating a memorable space for gatherings of friends, family and colleagues.



Capacity:

Up to 14 guests

Offering:

[MENU](#)

Link:

[VENUE](#)



GUSTO

Perfectly Located within Grand Elliot House on Deansgate, this central location offers a top quality Italian menu.

The Private Dining Room at Gusto Manchester seats up to 16 guests, making the private dining room comfortable for intimate lunches, dinners and business meetings.

Windows run along one side allowing in natural daylight and obscured glass to the other side into the main restaurant, so the room feels airy and spacious whilst remaining private.



Capacity:

Up to 16 guests

Offering:

MENU

Link:

[VENUE](#)



RAFT

Located in the heart of Spinningfields, the two-storey unit is a unique fusion of a restaurant, club and Privé spaces, offering an unforgettable experience for the senses. Inspired by bright colours, tropical scenery, and relaxed music, Raft brings a bohemian paradise to life.

Enjoy a world of delicious food, exquisite cocktails, and unique music. Whether you want a special meal or a fun night out, RAFT is the perfect place to relax, enjoy, and escape from the ordinary.

RAFT offers 2 beautiful private dining rooms for hire. Seating between 10 and 30 guests, our private spaces are something to unique. The largest area can fully open up to 80 guests, connecting to the stage & surrounding the DJ booth for a VIP experience.



Capacity:

Up to 30 guests

Offering:

MENU

Link:

VENUE



KING STREET TOWNHOUSE

The historic Wine Cellar is a hidden gem within King Street Townhouse. This intimate brick-vaulted setting is perfect to play host to private dining menus or a sommelier service, making meetings an occasion.

Indulge in a tailored tasting menu expertly paired with fine wines selected by our sommelier. Or opt for our signature British menu complemented by the perfect vintage.

Also available to book is The Screening Room, available for exclusive showings of your favourite films, sporting events, documentary's or presentations.

The Wine Cellar and The Screening Room can be privately hired together.



Capacity:

Up to 16 guests

Offering:

MENU

Link:

[VENUE](#)



GAUCHO

In a converted church in the centre of Deansgate, Gaucho Manchester features a stunning original church organ, which is at the centre of our stunning, split-level dining room. To experience the finest premium Argentinian steaks and wines, our 5-star Manchester steak restaurant is a must.

Designed to blend Argentine textures with modern elegance, the interior features a bright and lively dining room, a mezzanine dining gallery, a secluded cocktail bar and two private dining spaces.



Capacity:

The Wine Room: up to 10 guests
Private Dining Room: up to 18 guests

Offering:

MENU

Link:

[VENUE](#)



LUCKY CAT

Located in the heart of the historic King Street, Manchester. With dramatic high ceilings, grand interiors, and serving Asian inspired small plates, Robata grilled dishes, sushi and sashimi, designed to share and be devoured alongside an unforgettable selection of cocktails and fine wines.

Formally an old bank, Lucky Cat by Gordon Ramsay boasts three stunning private dining rooms, including the Vault, a space converted from the original bank and two premium dining rooms.



Capacity:

The Vault: up to 12 guests
Premium Dining Rooms: up to 8 guests

Offering:

MENU

Link:

[VENUE](#)



TATTU

Sat Proudly in Manchester's Bustling Spinningfields District.

Tattu delivers contemporary Chinese cuisine, fusing traditional flavours with modern cooking methods and exquisite presentation to create a unique and exciting dining experience.

The Parlour is Tattu Manchester's private dining room and exclusive event space. The space is serviced by its own entrance, bar and rest-rooms, whilst one-way glass offers complete privacy for the dining room with a view into the scenic Rose Garden and main restaurant above.



Capacity:

Up to 45 guests

Offering:

MENU

Link:

[VENUE](#)



STOCK EXCHANGE, THE BANK

Hidden within every Stock Exchange is a space reserved for the most special and private of transactions. welcomes, bold flavours and the creation of the meal of a lifetime.

The Bank at Stock Exchange Hotel has been reinvented to provide the setting for another type of special moment; an intimate experience, exclusive and light hearted in equal measure.

The Bank offers a culinary masterclass with Tom Kerridge's hand-picked team. A uniquely tailored opportunity to share in warm welcomes, bold flavours and the creation of the meal of a lifetime.



Capacity:

Up to 14 guests

Offering:

[MENU](#)

Link:

[VENUE](#)



VERMILLION

A three-floor labyrinth with six luxuriously designed spaces, individually created to accommodate every demand, from intimate dining to large scale weddings and events.

The iconic venue encompasses breathtaking architecture, bespoke furnishing, art from around the world, award-winning cuisine and our renowned luxury service with a mix of Thai, Indian and fusion cuisine throughout.



Capacity:

Up to 11 guests

Offering:

MENU

Link:

[VENUE](#)



FORTY-SEVEN

At The Peterman, a refined dining destination, you can enjoy a range of breakfast, lunch, and afternoon options, complemented by a cocktail menu that includes both classic favourites and exclusive signature creations.

The Peterman private dining room is a space designed for opulence and celebration – with plush sweeping velvet furniture, deep jewel toned purples and blues, highlighted with a mirror-finish to provide a lavish backdrop for all social gatherings; leisure or business. Crowned with a range of dishes and dining options direct from Asha's, this is a very special and intimate space for your next event.



Capacity:

Up to 24 guests

Offering:

MENU

Link:

[VENUE](#)



BROWNS BRASSERIE

From a former banking hall that was once one of the city's most notorious watering holes to the backdrop of your next group booking, event, celebration and special occasion, this historic brasserie and bar always has a story to tell.

Nestled in the vibrant heart of Manchester between the Arndale Centre, Royal Exchange Theatre and Piccadilly Gardens, the breathtaking venue has a magnificent sight of its own – their luxurious private dining room bookable space.

Whether it's a networking event, or business lunch, this opulent – yet cosy – private space allows for up to 16 guests of your choosing,



Capacity:

Up to 16 guests

Offering:

[MENU](#)

Link:

VENUE

**CONTACT OUR EVENT
SPECIALISTS TODAY TO BOOK
YOUR NEXT EVENT OR TRIP.**

EVENTS@CORPORATEAWAYDAY.COM